

DEMOGRAPHY

INTRODUCTION

Dr Marta Kuc-Czarnecka



SUBJECT OBJECTIVES

Student is able to characterize global demographic processes in terms of their volatility and the most important factors shaping them and their impact on economic and social values

LEARNING OUTCOMES

Student correctly characterize changes in demographic and social structures in the context of their impact on economic and social values

Student explains in depth the structure and variability of demographic processes as well as challenges resulting from the demographic situation in the global and regional dimension



SUBJECT CONTENTS

1. Population processes in the world
2. The theory of demographic transition
3. Demographic structures
4. Fertility
5. Mortality
6. Migrations
7. Urbanization



DEMOGRAPHIC RE

The background image shows a financial report with a large red stamp that says 'REJECTED'. The report includes a bar chart and a line graph at the top. Below the graphs, the text reads 'For the year ended March 31' followed by a list of expenses: Advertising and promotion, Bank charges and interest, Fundraising, Insurance, Meeting, Office supplies, Professional fees, Program costs, Rent, Salaries, benefits and contract labor, and Telephone plan.

For the year ended March 31

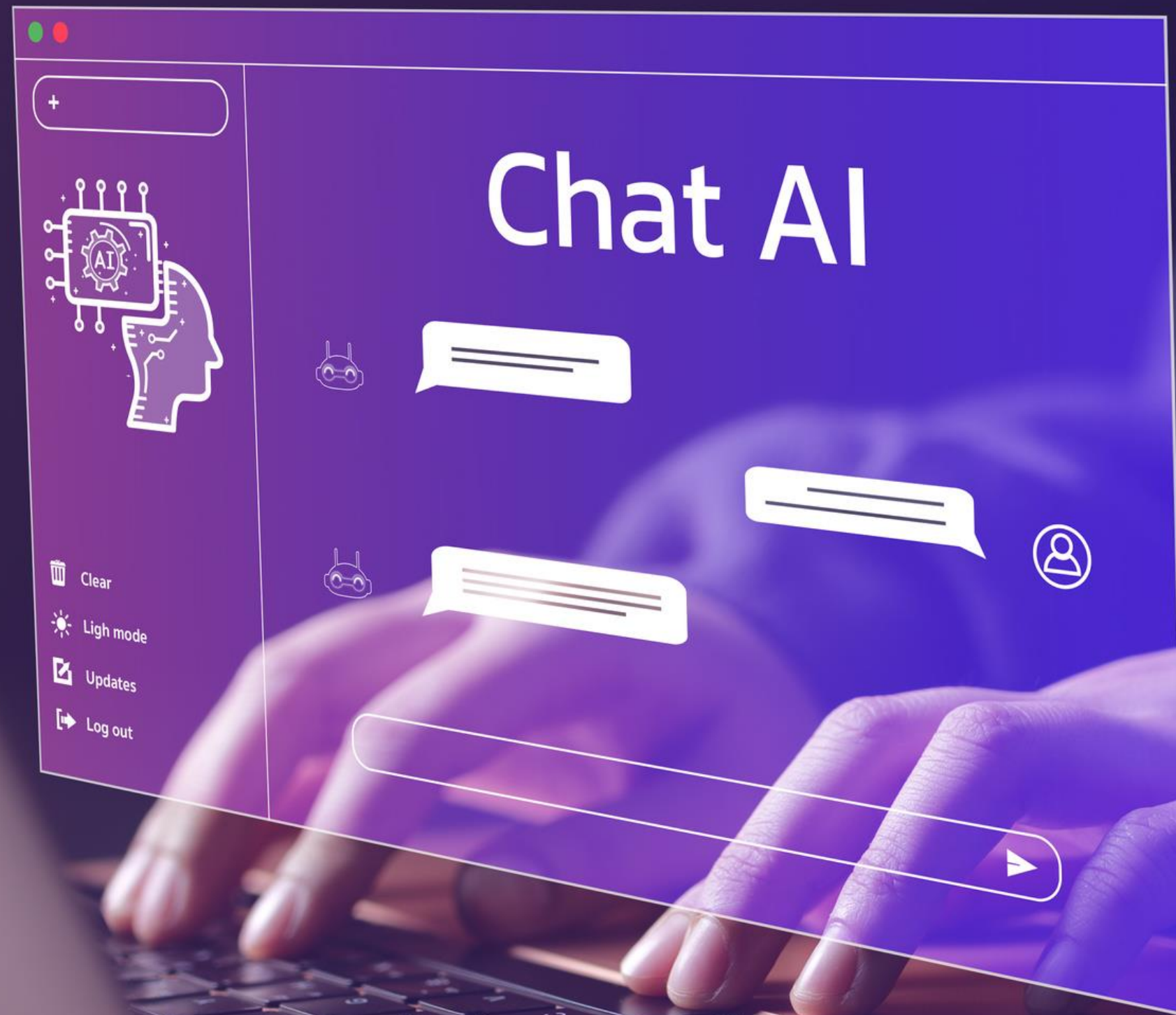
Expenses

Advertising and promotion
Bank charges and interest
Fundraising
Insurance
Meeting
Office supplies
Professional fees
Program costs
Rent
Salaries, benefits and contract labor
Telephone plan



HOW TO PASS?

Subject passing criteria	Treshhold	% of final grade
Practical exam	60	30
Group project I	60	40
Group project II	60	30



AI RULES

- can be used when preparing projects and interpreting results for classes
- it is necessary to indicate which tools were used and for which parts of the work
- it is not necessary to provide entire prompts

PBL - PROBLEM BASED LEARNING

PBL is a student-centered teaching method where students learn about a subject by solving complex, real-world problems

Instead of traditional lectures, PBL encourages active learning, critical thinking, and the application of theoretical knowledge to practical situations.





PBL

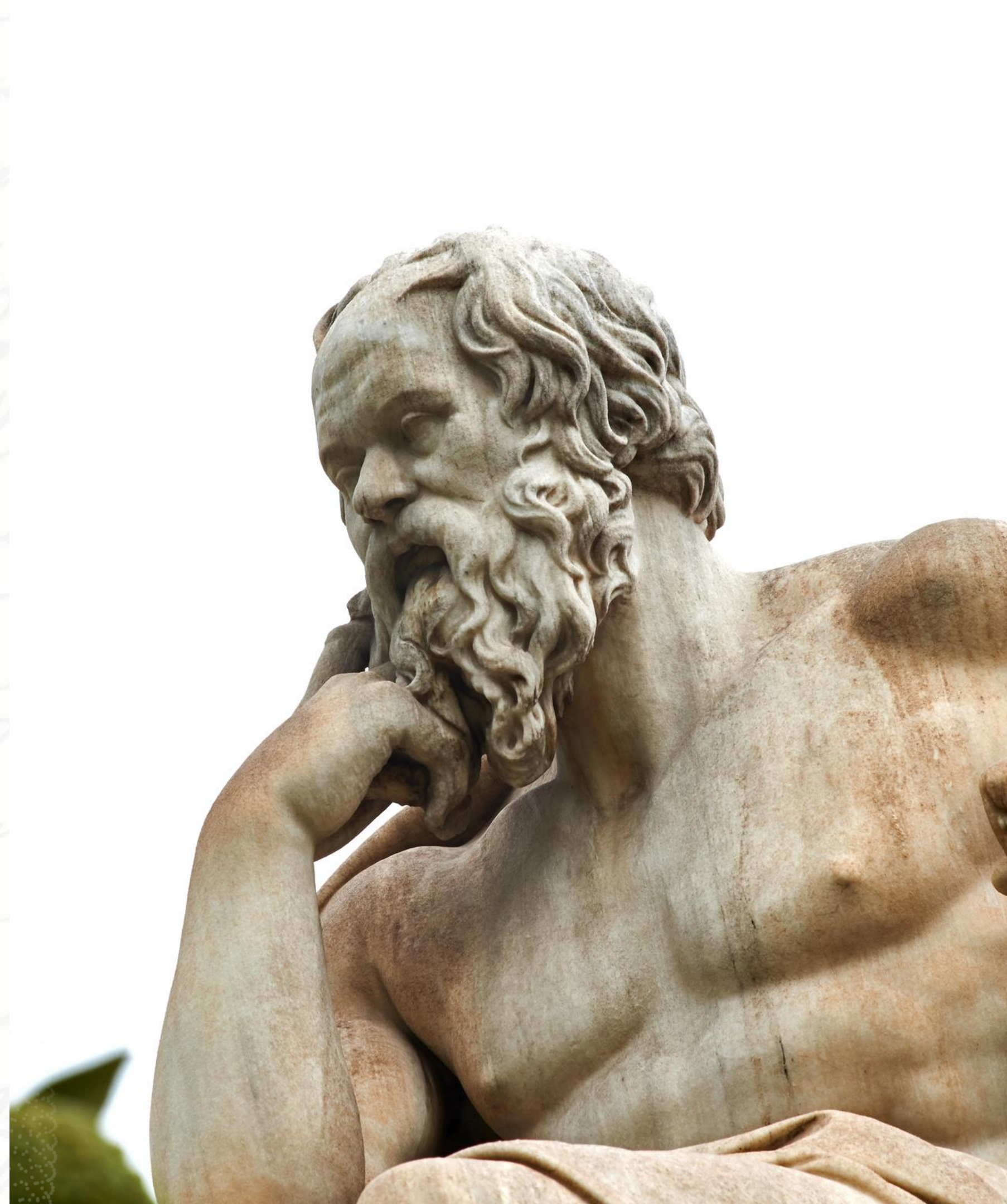
Students work in small groups to discuss and analyze problems, fostering teamwork and communication skills.

Students take responsibility for their learning by researching, proposing solutions, and reflecting on their approaches.

Instructors act as facilitators or guides, supporting students in their learning journey without directly providing solutions.

HOW IT'S GONNA WORK?

- 50% "Traditional" Lectures: we will spend half of our classes focusing on key demographic concepts, theories, and issues.
- 50% Problem-Based Learning activities: You will work in groups to apply theoretical knowledge to solve real-world demographic problems using the PBL process.





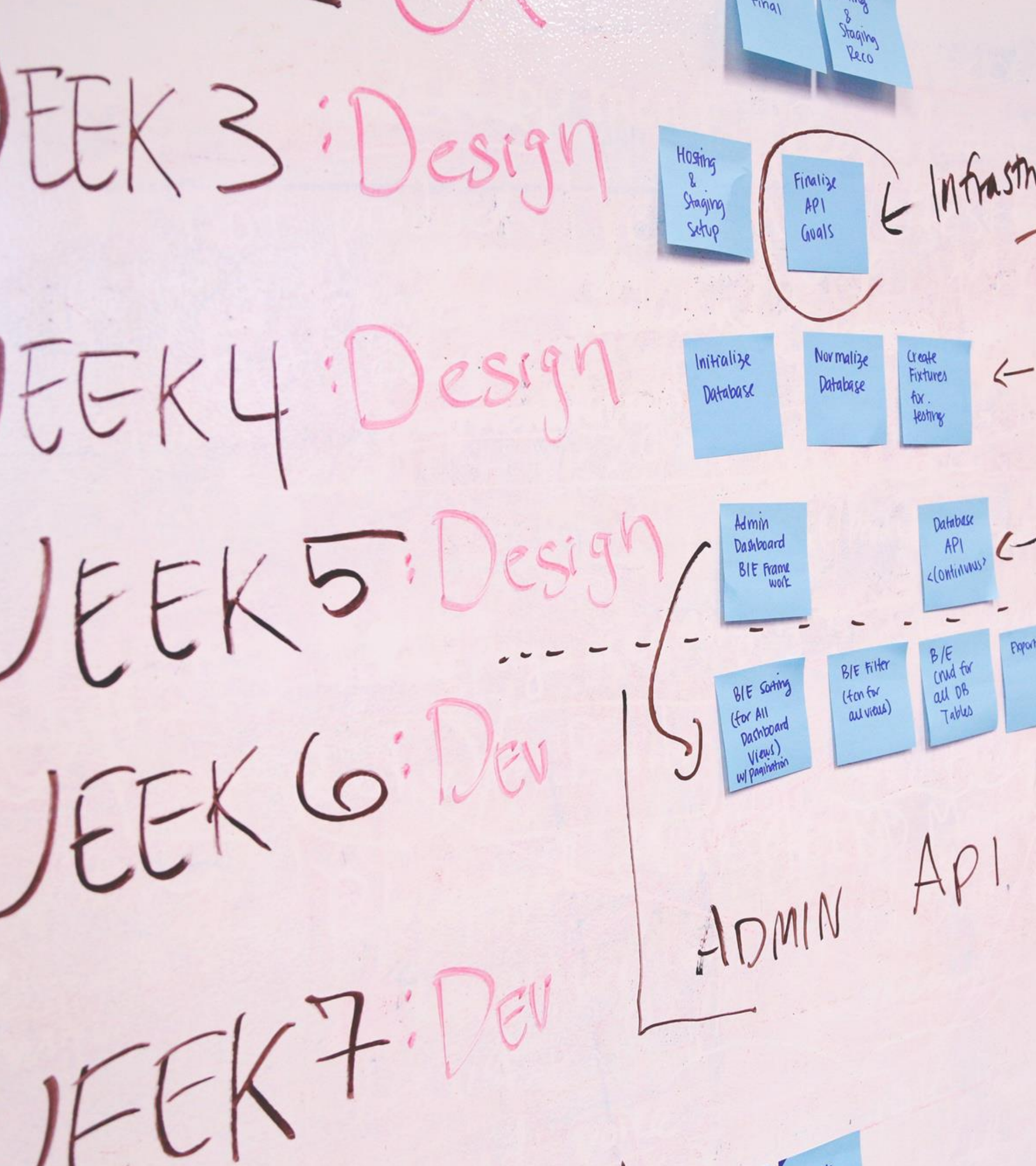
WHAT HAPPENS IN OUR DISCUSSIONS STAYS IN OUR DISCUSSIONS

In our debates and discussions, we maintain a respectful and open environment.

We don't criticize or make fun of anyone's ideas.

While we may not always agree with each perspective, our goal is to explore different viewpoints and build solid arguments.

Constructive dialogue and critical thinking are encouraged, and all contributions are valued.

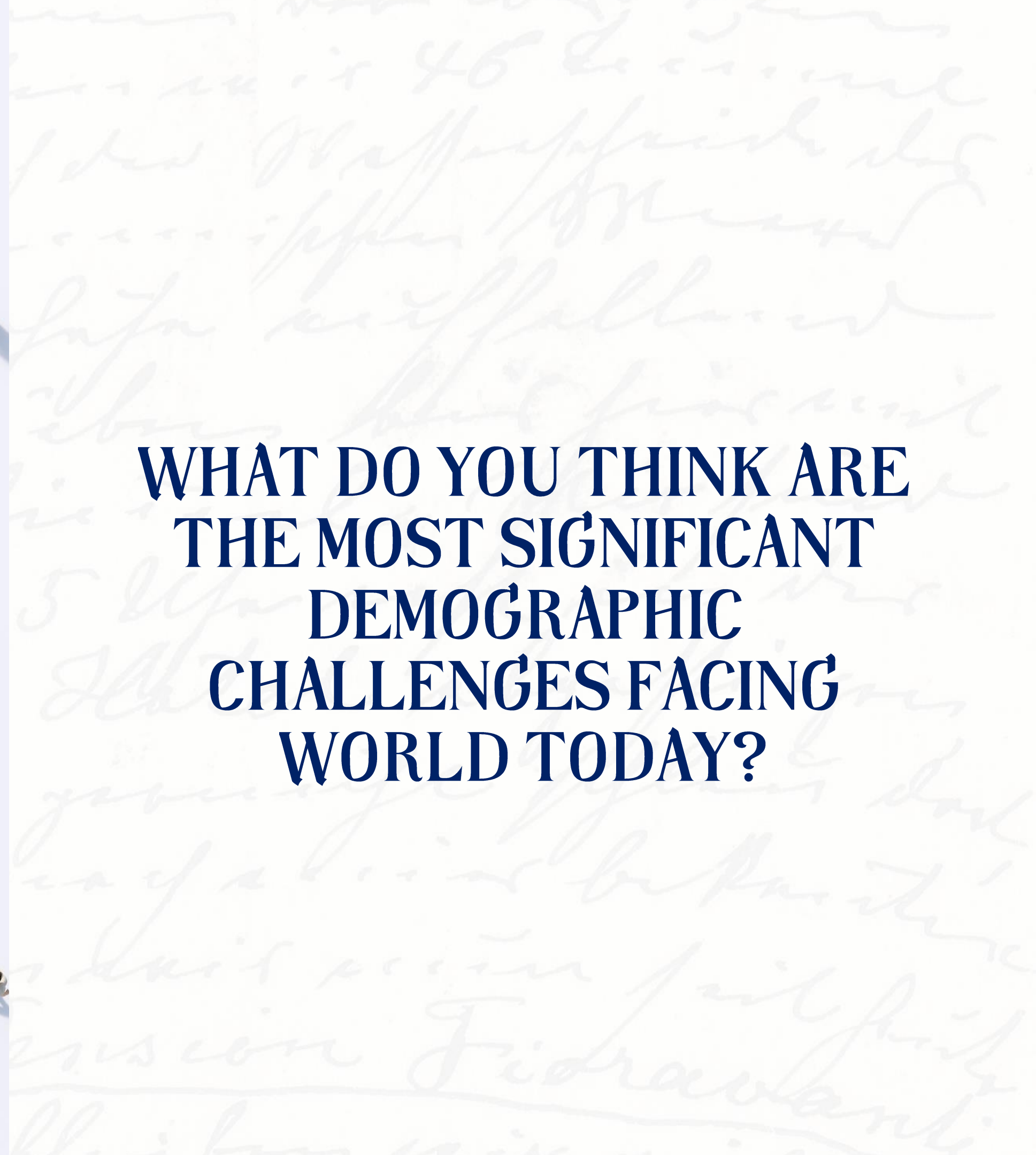


SCHEDULE

-
- 02/10 - Introduction
 - 09/10 - Demographic transition theory
 - 16/10 - Demographic structures
 - 23/10 - Fertility
 - 30/10 - Mortality
 - 06/11 - Migrations
 - 13/11 - Urbanization (on-line)
 - 20/11 - SDGs and demography (on-line)
 - PBL starting from 27/11

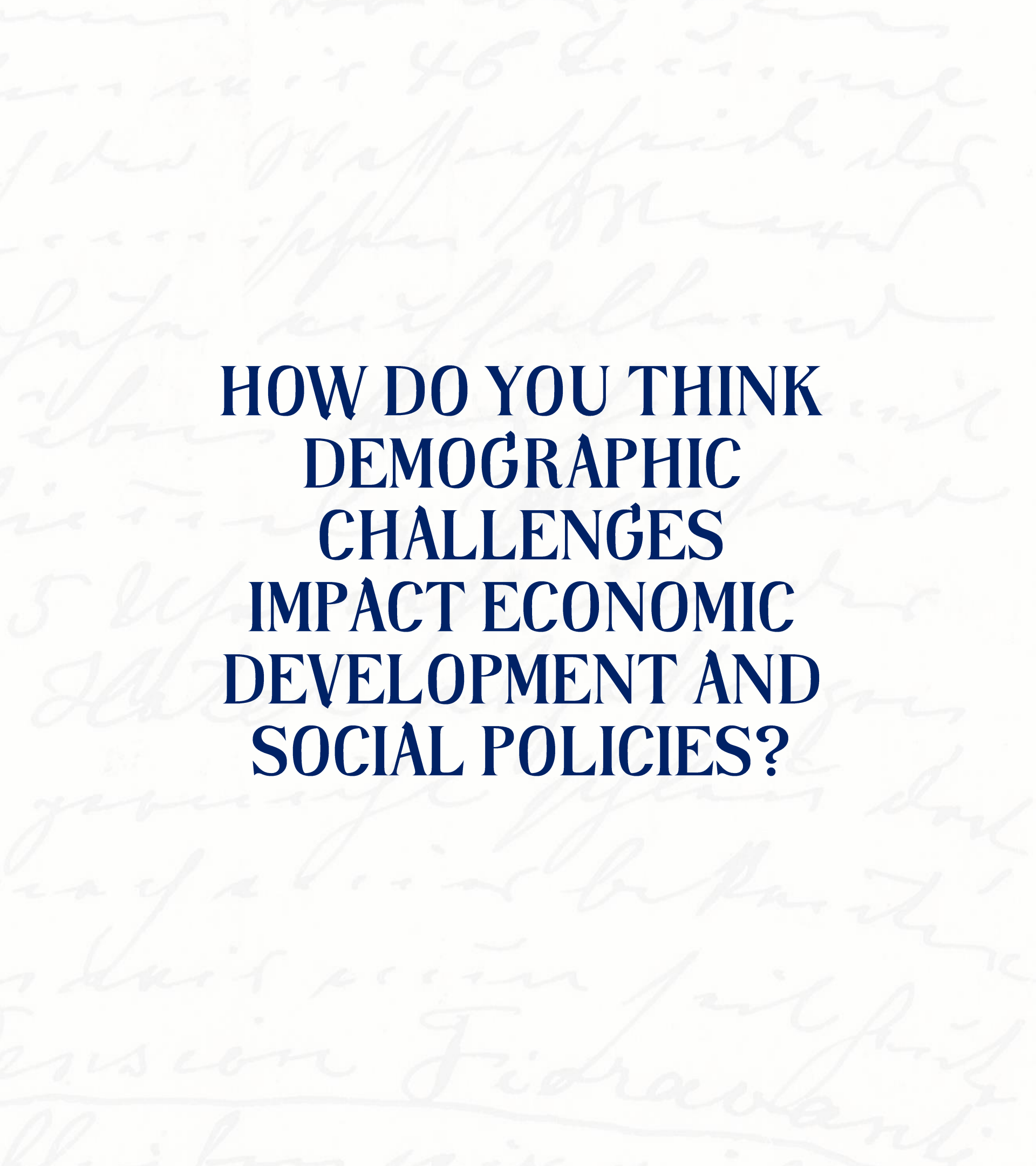


**WHAT DO YOU THINK ARE
THE MOST SIGNIFICANT
DEMOGRAPHIC
CHALLENGES FACING
WORLD TODAY?**



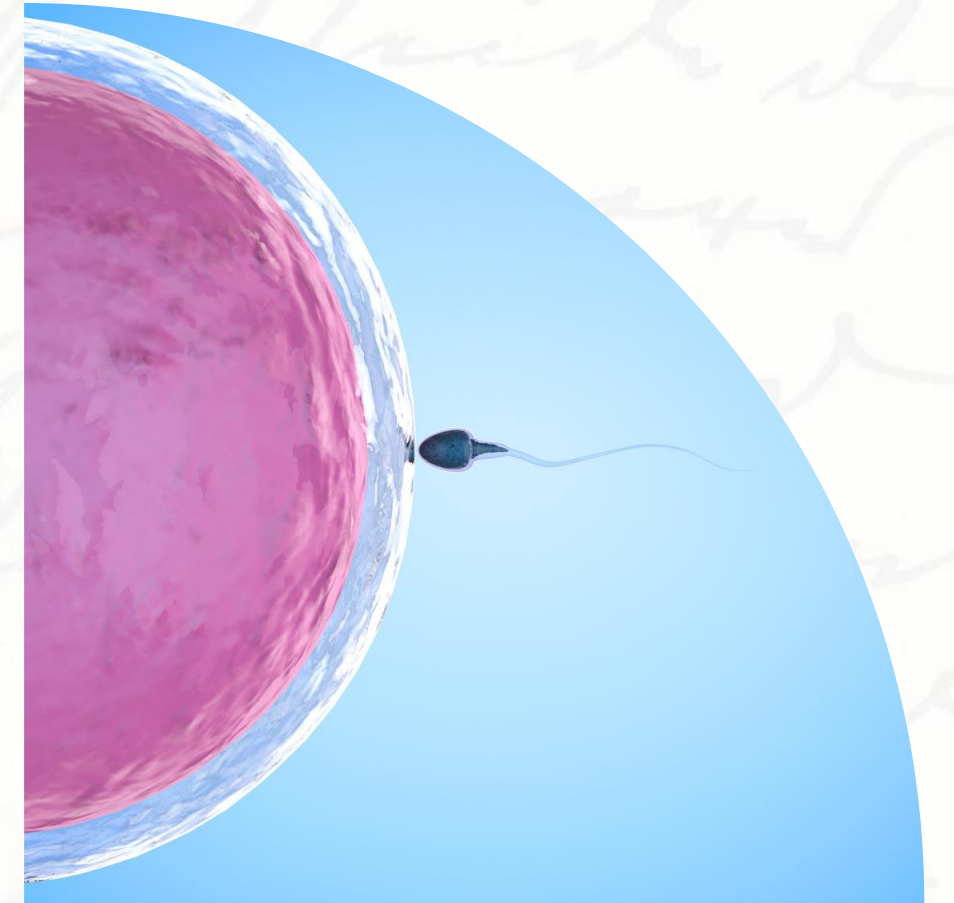
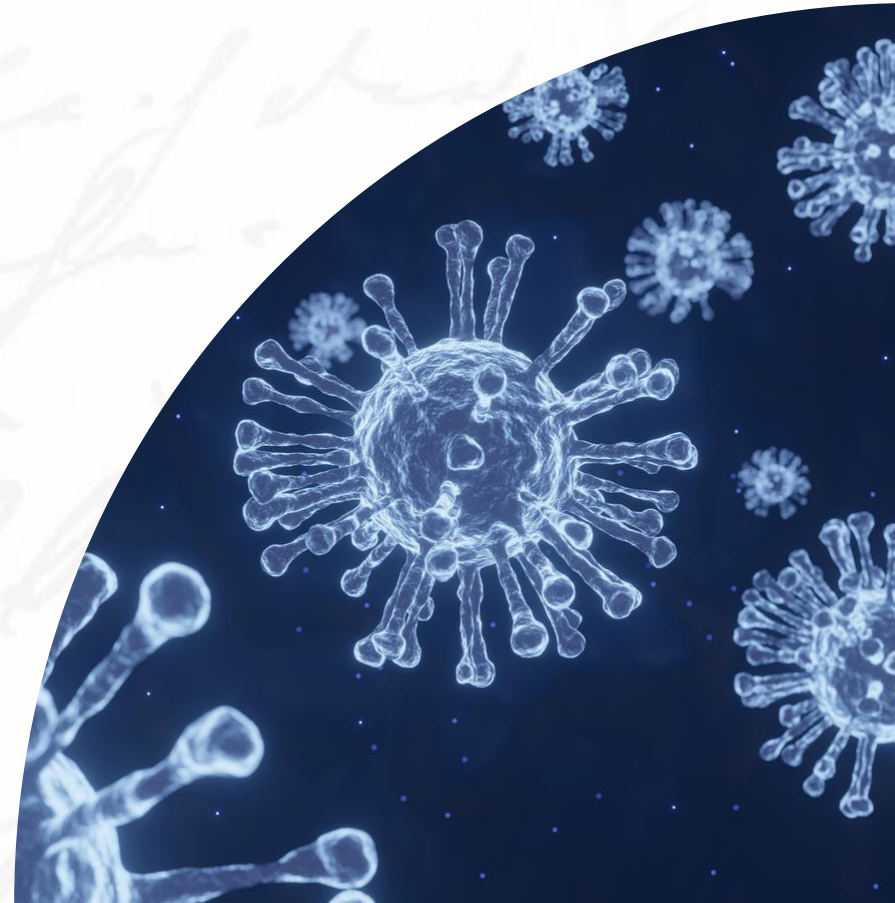


**ARE DEMOGRAPHIC
PROBLEMS THE
SAME ALL OVER THE
WORLD?**



**HOW DO YOU THINK
DEMOGRAPHIC
CHALLENGES
IMPACT ECONOMIC
DEVELOPMENT AND
SOCIAL POLICIES?**

THANK YOU!



Photos were taken from

